

# Duratap

## The Reliable Alternative

Boiling & Chilled Tap Systems

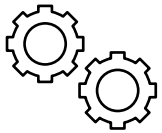




Engineered for a lifetime  
of reliable performance.  
Australian made  
Duratap™ water systems  
deliver instant chilled and  
boiling water, saving you  
time and money on costly  
servicing.

# The Duratap™ Advantage

Duratap™ systems represent a commitment to enduring design and performance, delivering consistently reliable boiling and chilled water solutions. Manufactured to exacting standards, each Duratap™ unit incorporates core engineering principles that prioritise quality, efficiency, and longevity.



#### Built To Last

Engineered for consistent, high-performance operation that minimises downtime and ongoing maintenance expenses.



#### Simple Installation & Servicing

Modular design and readily available generic parts mean efficient and cost-effective maintenance that can be done by any qualified plumber or technician.



#### Comprehensive Warranty

All Duratap™ systems are backed by a 12-month parts and labor warranty for peace of mind.



#### Certified Safety

Watermark™ and Electrical Safety certifications provide assurance of compliance with Australian standards.




#### ARC

Australian Refrigeration Council (ARC) tick licensing is underpinned by a rigorous training system which ensures licensed Duratap™ technicians are suitably trained and qualified.



#### Australian Made & Owned

Designed and built in Australia, Duratap™ systems meet stringent standards, ensuring superior quality and long-term reliability.



# Installation Requirements

For optimal performance and safety, it is recommended that installation be carried out by a qualified plumber and electrician in accordance with local building codes and regulations. Please refer to the specific product installation manual for detailed instructions and diagrams.

## **Water Supply**

A dedicated 1/2" BSP (15mm) isolation valve with a male threaded outlet is required for connection. The valve must be positioned for easy access to facilitate future servicing. The incoming water supply must be potable and microbiologically safe, with a dynamic pressure range of 250kPa (minimum) to 1000kPa (maximum).

## **Power Supply**

Two (2) independent, grounded 10-amp electrical outlets are necessary for the operation of the Duratap™ system. These outlets should be located within 1000mm of the underbench unit's intended installation position. The system is supplied with a 1-meter flexible power cord and plug for convenient connection.

## **Ventilation**

Duratap™ underbench chiller units require proper ventilation for optimal performance and longevity. Ensure a minimum 25mm clearance around the unit for air circulation. The BC and MC Series necessitate dedicated cupboard ventilation, including openings at both the top and bottom of the door to promote airflow.

# Duratap™ BC Series

## Boiling/Chilled Underbench Tap Systems



Precision-engineered for demanding environments, the Duratap™ BC Series delivers instant boiling and chilled water through a single, robust tap. Built with durability at its core, these taps are designed to withstand the rigors of modern commercial and home spaces, providing reliable performance you can depend on.



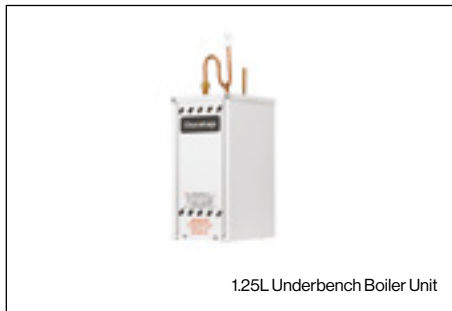
# Duratap™ BC Series

## Features & Benefits

- Dual-Temperature Delivery
- Heavy Duty Underbench Design
- Precise Temperature Control
- High-Capacity Performance
- Energy-Efficient Venturi System
- Flexible Configuration

## Options

- 50 or 100mm Tap Riser
- 5 Colour Finishes
- Font



BC Series		Boiler Capacity		Chiller Capacity	
Model	People Served	Size (L)	Cups p/hr (170ml)	Size (L)	Cups p/hr (170ml)
BC-1	10	1.25	100	8	50
BC-2	20	2.5	140	8	50
BC-3	25	5.0	220	8	50
BC-4	50	2.5	140	15	100
BC-5	60	5.0	220	15	100
BC-6	100	5.0	220	30	160

# Duratap™ TD Series

## Boiling & Boiling/Ambient Underbench Systems



For environments requiring a constant flow of near-boiling water, the Duratap™ TD Series provides a dedicated solution. Offering single or dual-tap configurations, its innovative Venturi system, driven by water pressure, ensures exceptional energy efficiency. Designed to meet the demands of high-volume usage, the TD Series delivers a reliable and consistent supply, minimising downtime and operational costs.



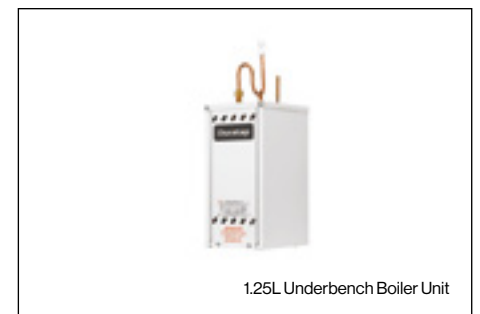
Boiling Tap Configuration

### Features & Benefits

- Heavy Duty Underbench Design
- Precise Temperature Control
- High-Capacity Performance
- Energy-Efficient Venturi System
- Flexible Configuration

### Options

- 50 or 100mm Tap Riser
- Dual Boiling/Ambient Tap
- Font



1.25L Underbench Boiler Unit

### TD Series

### Boiler Capacity

Model	People Served	Size (L)	Cups p/hr (170ml)
TD-1.25	10	1.25	10
TD-2.5	20	2.50	140
TD-5	25	5	220



# Duratap™ MC Series

## Chilled & Chilled/Ambient Underbench Systems



Designed for consistent chilled water delivery, the Duratap™ MC Series provides single chilled or dual lever chilled/ambient configurations. Featuring a high-efficiency refrigeration system for reliable performance, its compact design integrates seamlessly into your commercial or residential space.



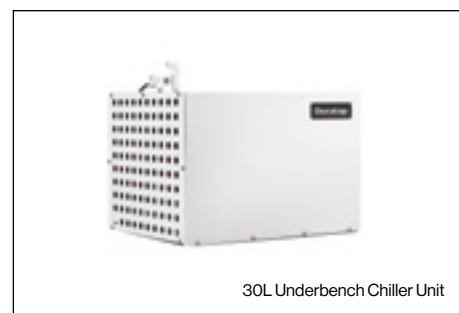
Chilled/Ambient Tap Configuration with Font

### Features & Benefits

- Heavy Duty Underbench Design
- Precise Temperature Control
- High-Capacity Performance
- Flexible Configuration

### Options

- 50 or 100mm Tap Riser
- Dual Lever Chilled/Ambient Tap
- Font



30L Underbench Chiller Unit

### MC Series

### Chiller Capacity

Model	People Served	Size (L)	Cups p/hr (170ml)
MC-8	10	8	50
MC-15	20	15	100
MC-30	40	30	160

# Boiling Billy™ Series by Duratap™

## On-Wall Boiling Tap Systems



**BoilingBilly**

Engineered for enduring performance in the most demanding commercial environments, the Boiling Billy™ Series delivers on-wall, instant boiling water. With heavy duty construction and proven reliability, these units have served the harshest spaces for over three decades.



BB-60 (Standard White Powdercoat Finish)

### Features & Benefits

- Easy To Use
- Hard Wearing On-Wall Design
- Precise Temperature Control
- High-Capacity Performance
- Flexible Configuration

### Options

- Stainless Steel Cover
- Dual Taps



BB-20

Boiling Billy Series		Dimensions		Capacity
Model	People Served	H x W x D (mm)	Size (L)	Cups p/hr (200ml)
BB-2.5	10	400 x 310 x 165	2.5	14
BB-5	20	400 x 310 x 165	5.0	25
BB-7.5	25	520 x 310 x 165	7.5	38
BB-10	50	520 x 310 x 165	10	50
BB-15	60	535 x 600 x 250	15	75
BB-20	100	535 x 600 x 250	20	100
BB-30	120	535 x 600 x 250	30	150
BB-40	150	775 x 600 x 250	40	200
BB-50	200	775 x 600 x 250	50	250
BB-60	250+	775 x 600 x 250	60	300

**Duratap™**  
575 Bourke Street  
Melbourne VIC 3000

Call 1300 387 282  
[sales@duratap.com.au](mailto:sales@duratap.com.au)  
[duratap.com.au](http://duratap.com.au)

**Duratap**